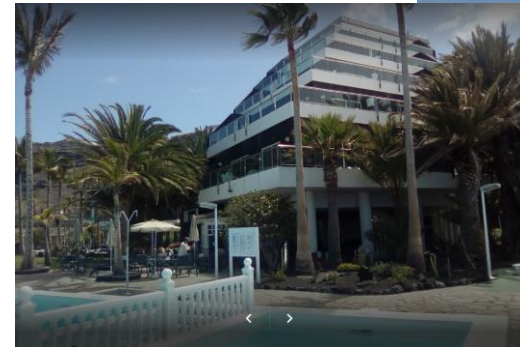
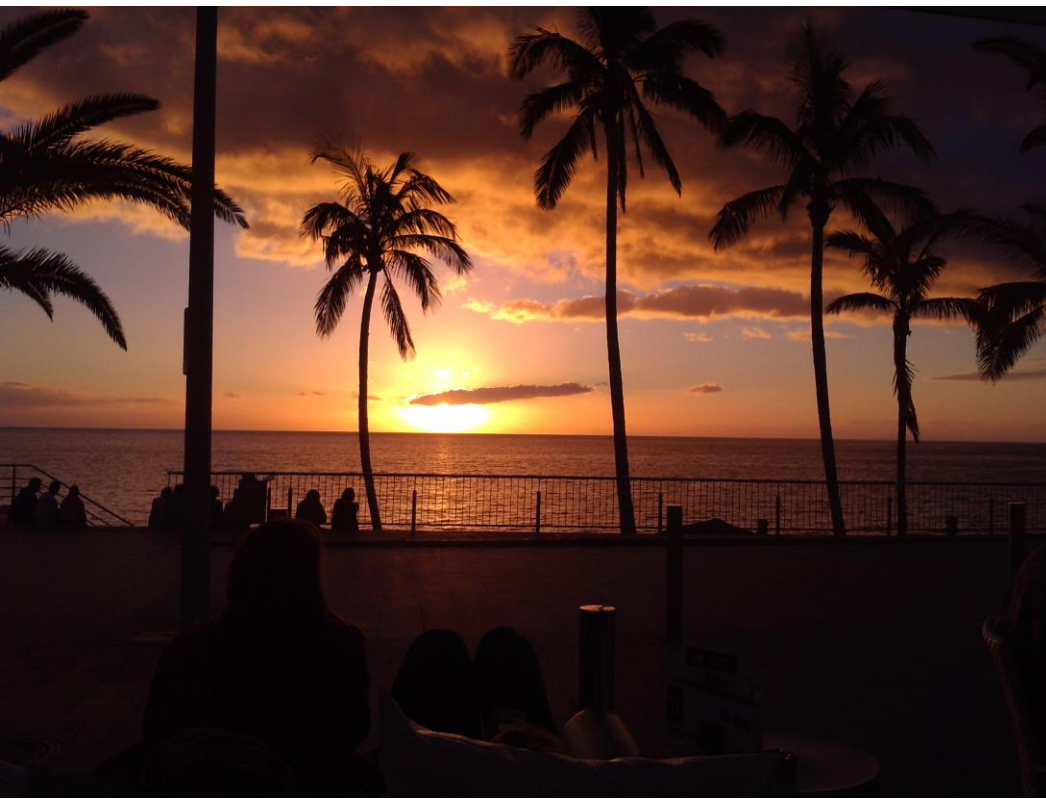


La Palma



Puerto Naos





Tzacorte



Los Llanos



Bus trip to the top

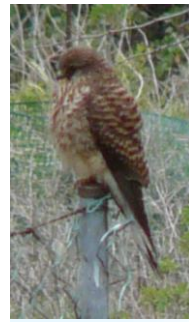
- on the way



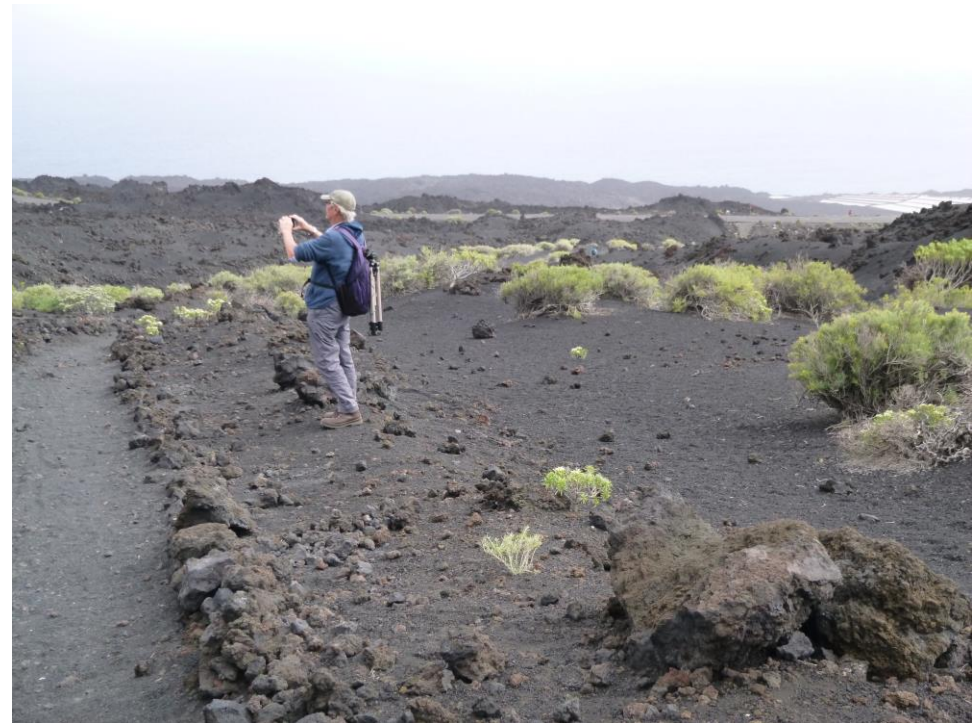
The Top



Trip to the south



More of the south – recent volcanics

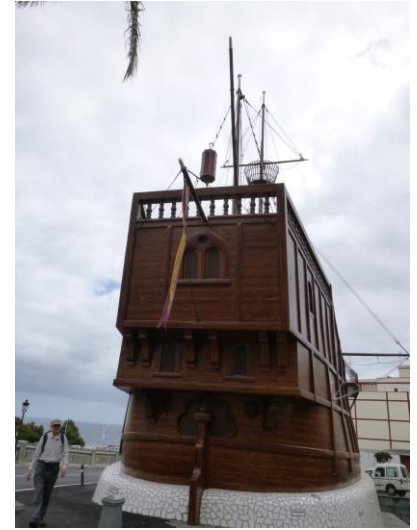


North East

sub-tropical rain forest



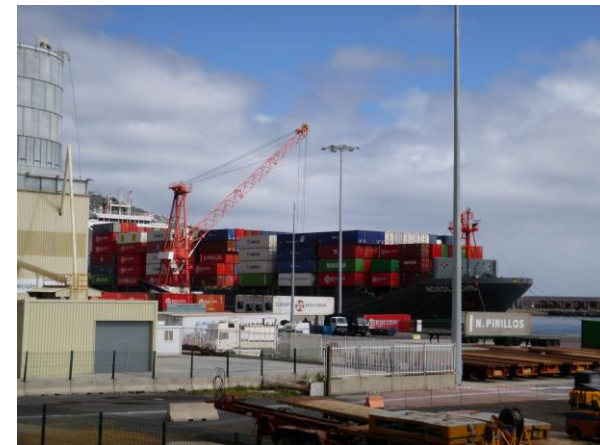
Santa Cruz



More Santa Cruz



Mt. Teide – 75 miles away!



The north east rain forest – again

-in search of the Laurel pigeon (unsuccessful!)

